



Bronze Industrial Group

گروه صنعتی برنز



44100 10 401083



0248051-2016

Bronze St. Kerman khodro Blvd. 16th km Jadeh Makhsous Karaj- Tehran / Iran

www.Bronze.ir

Tell: +9821-44984420-23

Fax: +9821-44986315-16



BRONZE INDUSTRIAL GROUP



Our mission is creating of a true sense of safety, calmness, and comfortably for our customers in difference of automobile classes , through designing and mass producing of trim parts includes variety of dashboard , door panels , parcel shelves , sound and thermal insulators and etc., with highe quality and time and cost's management through combining art , science and technology in designing and product manufacturing . Bronze Industrial Group through relying to science and domestic ability and progressed machines is ready to design and manufacturing any kind of products of domestic and global markets. Regarding the institutionalization of the R & D organization in the bronze industrial group, it is possible to transform any idea into a product and create new products.

we welcome designing and manufacturing any product in automotive products and non-automotive products, including construction products , home appliance, Urban furnitures, requirements for packaging industry, especially transportation , petro-oil industry and etc., is the main strategy of development and trade in Bronze Industrial Group.

History of the bronze industry group

1999: Accession to Holding Azin Khodro

1999: Production of automotive parts with thermoforming technology

2004: Production of Polywood Plate Sheets - WCP.

2007: Expanding Research and Development Center activities

2008: Development of injection technology

2009: Production of geomembrane sheets and geotextile

2013: Generate dashboard panels for cars

2017: Production of interior parts of the Renault Sandro product

2017: Production of door lock

2018: Designing and Manufacturing new cars door panels for Peugeot 208, 2008 and Citroen and etc.



Plastic Injection Technology

One of the largest and most advanced fully robotic plastic injection sites of country deployed in Bronze Industrial Group .



Various types of plastic assembly processes are carried out with advanced welding machines with welding, ultrasonic and vibration processing in this company .

Injection Machines					
Brand	Tonnage	Tie bar Dimension Size(mm)	moving platen		Injection Weight(kg)
			Min(mm)	Max(mm)	
Krauss Maffei	1000	1400*1150	500	1200	5
Krauss Maffei	1600	1850*1400	700	1600	8
Krauss Maffei	2300	2000*1600	800	1800	12
Nan Rong	1350	1250*1200	600	1200	6
Nan Rong	800	970*980	500	1000	4
Husky	2200	2000*1600	1000	2000	18
Italtech	1600	1800*1400	900	1600	7
Italtech	1300	1550*1350	700	1400	6
Engel	2700	2000*1400	800	1800	9
Engel	2000	1900*1400	700	1800	9



In addition, 37 plastic injection machines from 80 to 800 tons for the production of smaller parts used in the production cycle.



Polywood Extruder Line

Wood Plastic Composite

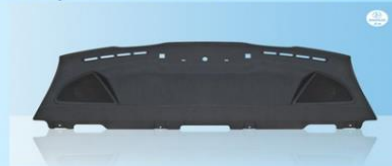


Bronze Company is the only manufacturer of Poly wood sheets in Iran.

The main extruding product at Bronze Plastis Salon is poly woods Sheets, These sheets, which make up the bulk of our products are among the most commonly used materials in the world of door panel and parcel shelves. The above mentioned sheets were imported from outside the country, By launching an extruding machine and producing these sheets in the bronze company, In order to self-sufficiency and to prevent the withdrawal of currency from the company, a significant step was taken. In most products of the company, wood composite sheets are used to produce the final products.

WPC composite plastic sheet has this following unique properties:

- The combination of polymer and wood powder, "industry reconciliation with nature"
- High Formation Ability
- Highly stable against moisture
- Resistant to growth of microorganisms
- Quick access to the final product
- Possibility to delineate all kinds of decorative covers such as: fabric, PVC, leather and etc.
- 100 % recyclable



Extruding Machines

Machine	Sheet thickness (mm)	Width	Capacity (kg per hour)
BG1	1.5 to 2.8	2.2	460 kg/ph
BG2	1.5 to 2.8	1.8	400

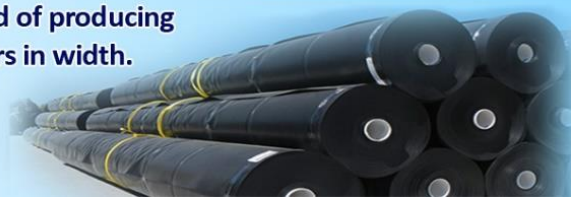


Production of geomembrane sheets

According to the definition, ASTM D4439 geomembrane liner is a very low permeability membrane used in engineering projects to prevent liquid penetration. Geomembranes have three types of thermoplastic polymers, thermosets and hybrid polymers. The most widely used are polyethylene geomembranes (VLDPE, LLDPE, HDPE) and PVC polyvinyl chloride geomembrane.



The production capacity of this company is in the field of producing geomembrane sheets and single sheets up to 2 meters in width.



Thermoforming Technology and Hot Thermopharming



by processing of thermoforming technology variety of WCP sheets laminating and assembling with some kinds of leather, pvc , fabrics , carpets and etc,. This Company provides 100 % of domestic auto markets needs.

Door Panels



Parcel Shelves



Hot Thermofarming process for producing various Sound insulation and thermal insulators

Insulators





Research and Development



Organizing the R & D unit as a department of COP is responsible for creating added value and transforming the idea into a durable product, performance, high reliability for customers, The important point of the Bronze Industrial Group's research and development team is the ability to design a product and design a test product test. Since 2007, this unit has managed more than 300 design and engineering projects, including product design, product line design, special machinery and control equipment..

Laboratory

The laboratory of the bronze industrial group is based on the international standard ISO IEC 17025 and, in addition, the laboratory is the partner of the General Directorate of Standard and Industrial Research of Tehran Province, and the company ETRAC, Sazeh Gostar Saipa and Renault. The grouping of laboratory tests and mechanical testing is a functional chemical of the polymer industry.



Supply Chain Management and Shipping

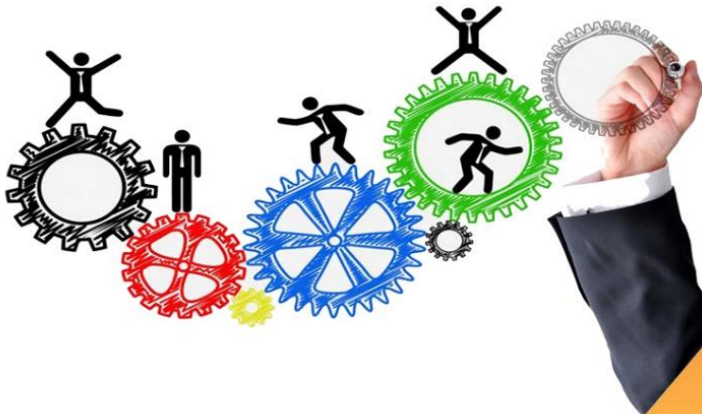


Organizing and managing the huge chain of supply and delivery of the bronze industrial group is done entirely systematically based on the logic of detecting, tracking and controlling the moment of all routes by using the Kanban system. Conducting and controlling at least 170 manufacturers and also sending a large volume of products to our customers across our land with a timely delivery commitment by the company's comprehensive warehousing and logistics system. The organization, with the use of mechanized and high-altitud warehouses, maintains a huge amount of needed parts with precision and fully mechanized.



Human Resources

The most important and valuable assets of the Bronze Industrial Group are 800 dedicated and expert human capital, which at least in 20 specific work processes of company , including : Production, Research and Development Units, Technical, Commerce, Finance, Logistics, Quality assurance, Systems and Methods and Management of Export Projects are working.



Contact with Managers



CEO- M.Kazemzadeh
Kazemzadeh@bronze.ir



Deputy- K.Fakhri
Fakhri@bronze.ir



R&D – M.Tatari
+989122102816
mostafa.tatari@bronze.ir



Commercial - D.Keshavarz
+989122146807
dkeshavarz@bronze.ir



Sales- M.Hosein Pour
+989123774986
hosseinpour@bronze.ir

Export Project



Systems & Methods - S.Azimi
+989122177691
sazimi@bronze.com - s.azimi.1979@gmail.com

Export Project

For Quick availability and business talks please contact Mr. Hosseinpour and Mr. Azimi.

Hoseinpour +98-9123774986
Azimi +98-9122177691